

"MUST DO'S" TO AVOID TROUBLE!

Avoid 90% of Problems by doing these things!



1. READ THE LIABILITY DISCLAIMER!

You are responsible for all aspects of this model and how it flies. You're it!

2. READ ALL THE DOCUMENTATION

before doing anything else!

3. INSPECT CAREFULLY immediately upon arrival! Retain all packaging until the check out is complete!

4. READ & LOOK! At everything! Do it once & then again!

5. REMEMBER IT'S ALMOST ready to fly & requires some modelling skills

6. ALLOW ENOUGH TIME to enjoy the assembly process!

7. DRY TEST ASSEMBLE everything before you glue anything!

8. USE 30 MINUTE EPOXY when joining wings and installing stabilizers only after you have test assembled without glue! Once parts are glued they cannot be unglued and they cannot be returned!

9. PLAN AHEAD! BE CAREFUL! If you get in Trouble... Don't Panic! Follow the Trouble-shooting Guide below.

10. TEST TEST!!! TUG TUG!!!

EVERYTHING... BEFORE and AFTER

EACH FLIGHT. We have pre-installed control rods, hinges, control surfaces and many other essential parts. We have pinned inboard and outboard hinges to provide an additional level of security. However, you should double check every control surface and pre-installed component before and after each flight. **Ultimately you are responsible for the integrity of all components.** Check everything before and after flying. Tug on control surfaces, control rods, mounting bolts, T-nuts, mounting plates etc.

11. DO NOT OVERTIGHTEN THE WING BOLTS! Your model will be equipped with nylon or metal wing bolts. Do not overtighten the bolts when installing the wing. **If you overtighten the wing bolts you can cause wing separation in flight due to the following damage.**

- stripped wing bolts
- stripped wing bolt T-nuts
- sheared or fractured fuselage mounting blocks or plates
- damaged or warped wings
- wing bolt heads pulling through the wings
- damaged or warped fuselage

Use a screw driver and **hand tighten the wing bolts only until the wing is firmly seated in the wing saddle and the wing bolts are hand snug.** Do not tighten using a nut driver or an electric drill or electric screw driver. If you have any doubt that the wing mounting bolts are not securely attaching the wing to the fuselage, remove the wing bolts and wing and check everything carefully before flying.

12. DO NOT OVERPOWER YOUR MODEL! Stay within the recommended power range for your model. If you overpower the model you run a high risk of structural failure that will lead to loss of control and a subsequent crash that will destroy the model and may cause injury or property damage.

13. ASSUME NOTHING! Check everything repeatedly and do not fly this model unless you are satisfied that everything is in good working order.



PLEASE READ THIS FIRST!

AVOID TROUBLE!

PLEASE REVIEW THIS DOCUMENT CAREFULLY INCLUDING THE LIST OF "MUST DO'S!" ON PAGE 4.

AVOID 90%+ OF PROBLEMS!
PLEASE SEE PAGE 4

Liability Disclaimer

It is important that the following liability disclaimer be
READ BEFORE ASSEMBLING OR USING THIS PRODUCT

Model airplanes, model engines, model engine fuel, propellers and related accessories, tools and equipment can be hazardous if improperly used. Be cautious and follow all safety recommendations when using your VMAR model airplane. Keep hands, tools, clothing and all foreign objects well clear of engines when they are operating. Take particular care to safeguard and protect your eyes and fingers and the eyes and fingers of other persons who may be nearby. Use only a good quality propeller that has no cracks or flaws. Stay clear of the propeller and stay clear of the plane of rotation defined by the propeller.

The Manufacturer, Distributor, Retailer and/or other suppliers of this product expressly disclaim any warranties or representations, either expressed or implied, including but not limited to implied warranties of fitness for the purposes of achieving and sustaining remotely controlled flight.

In no event will the Manufacturer, Distributor, Retailer and/or other suppliers of this product have any obligation arising from contract or tort, or for loss of revenue or profit, or for indirect, special, incidental, consequential or other damages arising from the use of this product.

In purchasing and/or using this product, the user accepts all responsibility for its use and accepts all liability associated with such use.

Proceeding with assembly and use of this product indicates Agreement With and Acceptance of the Liability Disclaimer.

CAUTION

A Remote Control Model Aircraft is not a toy. It is a flying model that functions much like a full size airplane. If you do not assemble and operate this product properly you can cause injury to yourself and others and damage property. **DO NOT FLY** this model if you are not qualified.

You are ultimately responsible for the mechanical, aeronautical and electrical integrity of this model and it's structure, control surfaces, hinges, linkages, covering, engine, radio, wiring, battery and all other components. Check all components before and after each flight. Don't fly until it's right!

**PLEASE INSPECT THIS PRODUCT IMMEDIATELY & THOROUGHLY.
RETURNS MUST BE SHIPPED IN ORIGINAL PACKAGING.**

Inspect everything carefully immediately upon receipt. Retain all packaging until the check out is complete. Damaged, missing or defective components must be reported to your vendor within 30 days of purchase and **BEFORE** any assembly begins. **Neither VMAR nor your vendor will be able to provide parts to replace defective or shipping damaged items if they have been assembled or have not been reported within 30 days of purchase. (cont'd Pages 2-4)**



PLEASE READ EVERYTHING BEFORE ASSEMBLY!

VMAR is a Trademark of VMAR Manufacturing Inc. and authorized VMAR Agents worldwide

Copyright Richmond RC Supply Ltd



Thanks for purchasing a VMAR ARF product. VMAR Manufacturing and your vendor are proud to offer you this top quality product at an exceptional price. A great deal of attention has gone into assuring the quality of this product. Every component has been checked and double checked to make sure nothing has been left out.

If upon arrival of your model you note shipping damage or you notice that items are damaged, missing or defective **DO NOT PROCEED WITH ASSEMBLY. DO NOT START UNLESS IT IS RIGHT!**

Damaged, missing or defective components reported to your vendor more than 30 days after purchase or after any assembly has started will be treated on a case by case basis and a fee will normally apply for components and shipping thereof.

If you think something is missing or wrong or is confusing... don't panic! Please check the entire box and inside the fuselage again. If you still can't find it or you appear to have a damaged component or you are just concerned about something that may not seem just right, please see the Troubleshooting Procedure on the opposite page.

Please check the kit over BEFORE beginning assembly. There is a detailed contents check list in the Important Information sheet or in the Assembly and Operations Manual. **INSPECT & TEST FIT EVERYTHING** before glueing or permanently attaching. Please do not begin assembly if you notice shipping damage, defective or missing parts. We cannot replace components once assembly has started. **Please retain the shipping and display box until you have checked everything out.**

Your model contains a high level of graphic detailing. Occasional ripples or minor fluctuations in the graphics or colors or fibreglass components are normal and do not affect the integrity of the model. Every effort has been made to ensure a quality finish.

Contact Procedures.

After having worked through the Troubleshooting Procedure documented on the opposite page, if you need to contact us in order to resolve issues related to damaged, missing or defective components or to get answers to questions specifically related to this model please send us an email to tech@richmondrc.com. Please provide information related to where you purchased your model, date of purchase, your customer and phone number if applicable. Take the time to review the contents check list on the Parts & Setup sheet or in the Assembly and Operations Manual and determine the description and/or legend number of the damaged, missing or defective item. In the case of questions please consult the Important Information sheet and the Assembly and Operations Manual and refer to the step number and page number that relates to your question.

If you cannot send us an email, please phone or fax us. We can be reached by phone at 604-940-1066 or by fax at 604-940-1066 from 10am to 6pm M-F Pacific Time. Customers outside of North or South America may wish to check our web site for contact information in your market area.

In the case of questions, before contacting us please ensure you have thoroughly reviewed all documentation provided with this model and checked our web site at www.richmondrc.com for aftermarket information that may assist you. Please be specific in your request so that we can service you quickly and effectively. For damaged, missing or defective items please describe the item with the appropriate part number, page number, legend code or assembly step.

Return Procedures and Conditions.

WE DO NOT ACCEPT FREIGHT COLLECT SHIPMENTS.

After having worked through the Troubleshooting Procedure documented on the opposite page, if you need to return your model:

ALL SHIPMENTS MUST BE PREPAID

1) Pack the kit exactly as received. Put all components back into their bags and original boxes. Pack and seal the original boxes to enable the kit to withstand a typical shipping episode with a courier or the post office.

2) If you are located in the United States including Alaska, Hawaii, Puerto Rico or USA territory or using a U.S. Military APO, please insure & prepay the shipment and return the model by mail or courier only to... **Richmond RC Supply Ltd, 1574 Gulf Rd., Point Roberts, WA, 98281-9007 (No personal deliveries. Courier or mail only)**

3) If you are located in Canada, Mexico or South America please insure & prepay the shipment and return the model by mail or courier only to... **Richmond RC Supply Ltd, #114 - 7350 72nd Street, Delta, B.C., V4G 1H9, Canada. (No personal deliveries. Courier or mail only).**

4) If you are located elsewhere, please contact your vendor for return information and/or consult our web site at www.richmondrc.com for procedures in your market area.

WE DO NOT ACCEPT FREIGHT COLLECT SHIPMENTS.

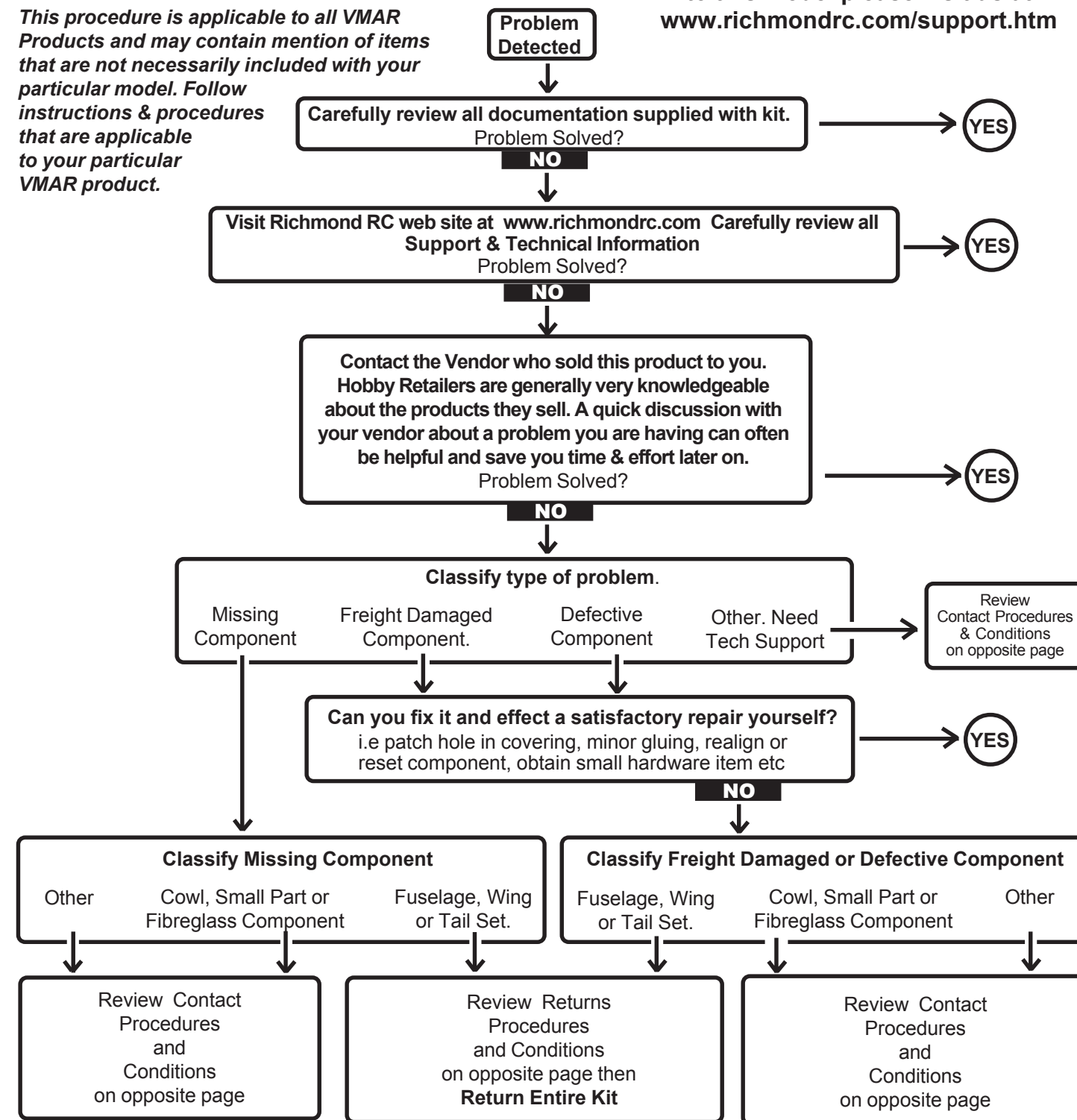
ALL SHIPMENTS MUST BE PREPAID



TROUBLESHOOTING PROCEDURE

For more information that may be relevant to this model please visit us at www.richmondrc.com/support.htm

This procedure is applicable to all VMAR Products and may contain mention of items that are not necessarily included with your particular model. Follow instructions & procedures that are applicable to your particular VMAR product.



PLEASE READ EVERYTHING BEFORE ASSEMBLY!

VMAR is a Trademark of VMAR Manufacturing Inc. and authorized VMAR Agents worldwide

Copyright Richmond RC Supply Ltd

Read_Me_First_All_20021006.pmd